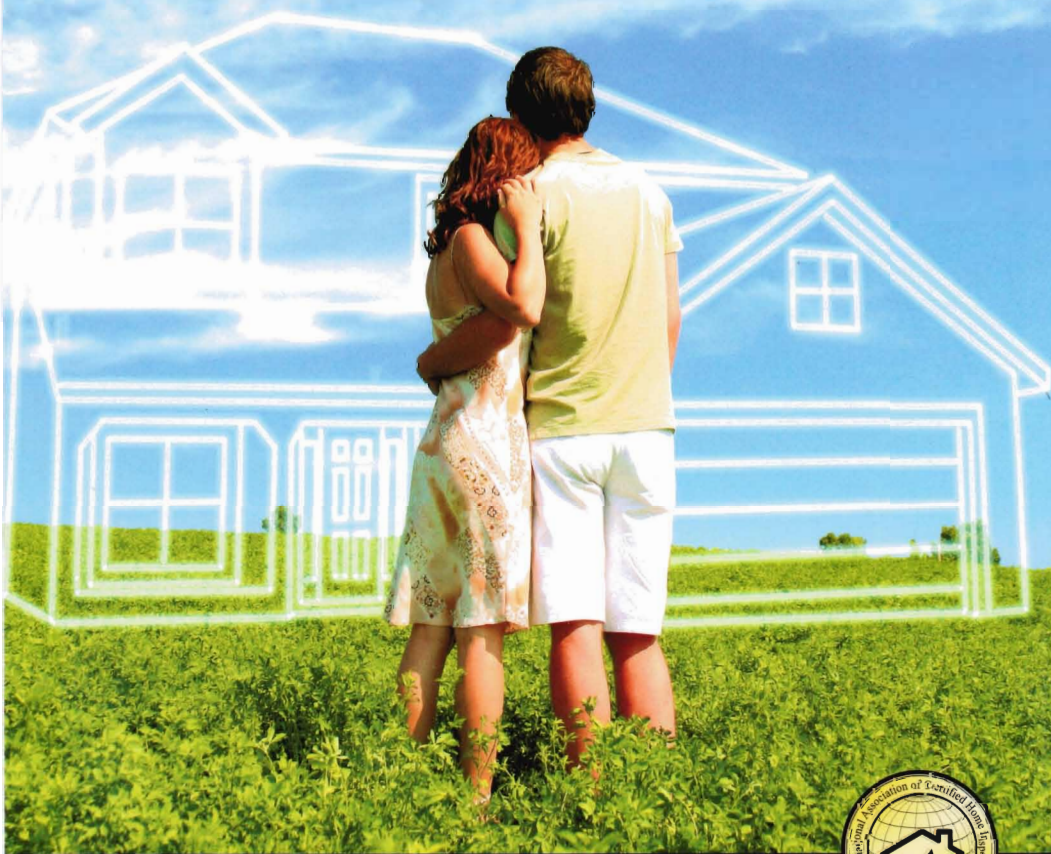


Protect your dream home with an 11th Month Warranty Inspection

Most builders offer a one-year warranty on a new home. We'll come out during the 11th month and perform a full home inspection before the builder's warranty expires.

Our non-invasive inspection is based on observations of the visible and apparent condition of the interior and exterior of the structure, including its major systems and components. Following your inspection, you will receive a comprehensive report, complete with photos, that includes information on any material defects observed on the date of the inspection. Armed with this information, you can take any necessary steps to hold your builder and his subcontractors to their warranties while they're still in force.

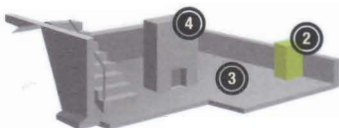
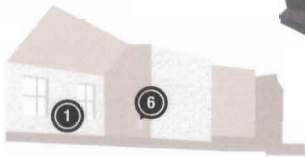


Find an inspector at www.inspectorseek.com



Included in your 11th Month Warranty Inspection

A Warranty Inspection is a comprehensive evaluation of the interior and exterior of your new home and its major systems and components. It's conducted during the 11th month of your occupancy – before your builder's warranty expires. We follow InterNACHI's comprehensive Standards of Practice. This means that we'll inspect all of the following (if accessible):



- ① interior & exterior walls, windows & doors
- ② HVAC
- ③ basement/crawlspace
- ④ fireplace
- ⑤ roof & attic
- ⑥ electrical
- ⑦ plumbing

